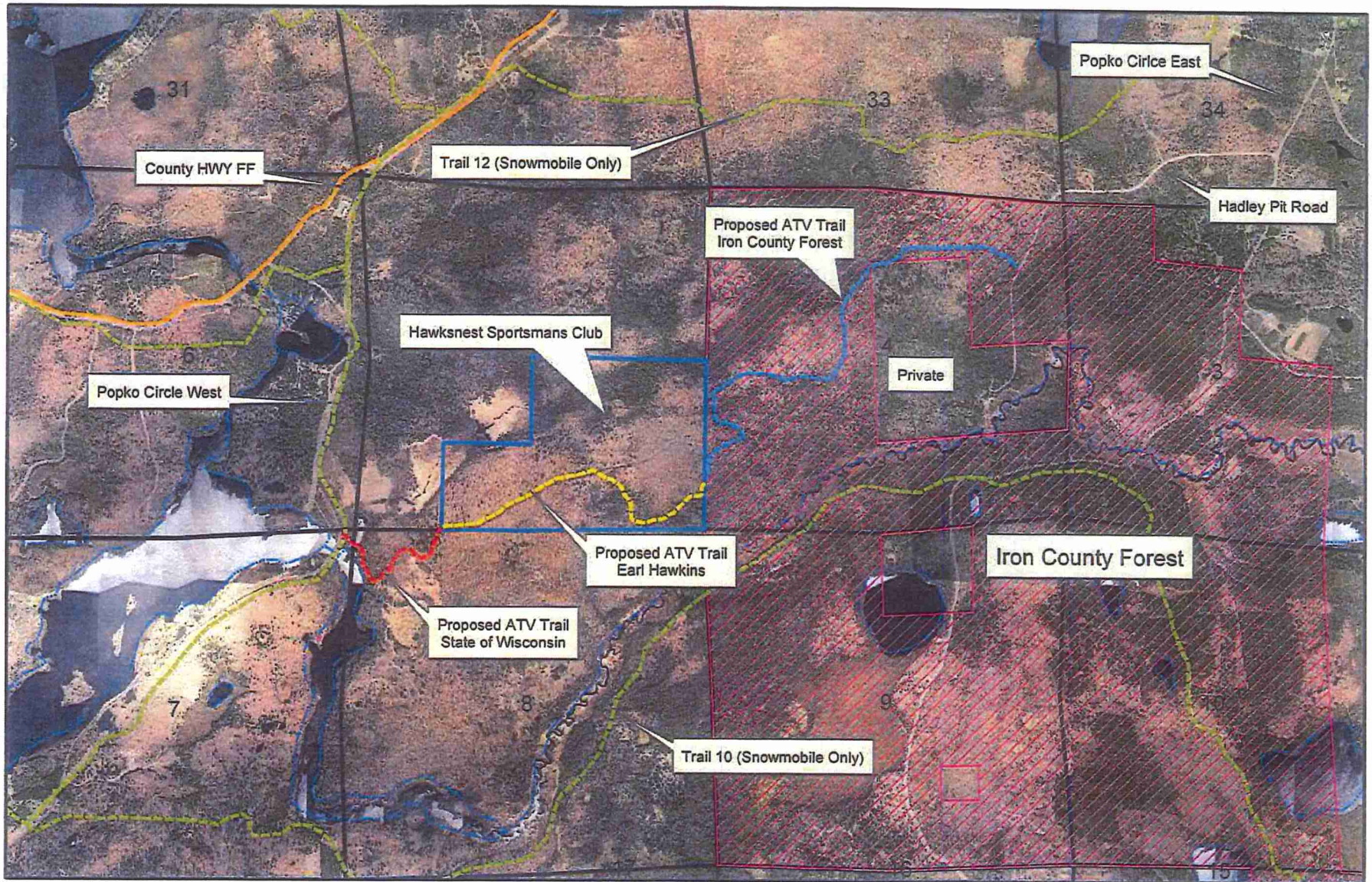


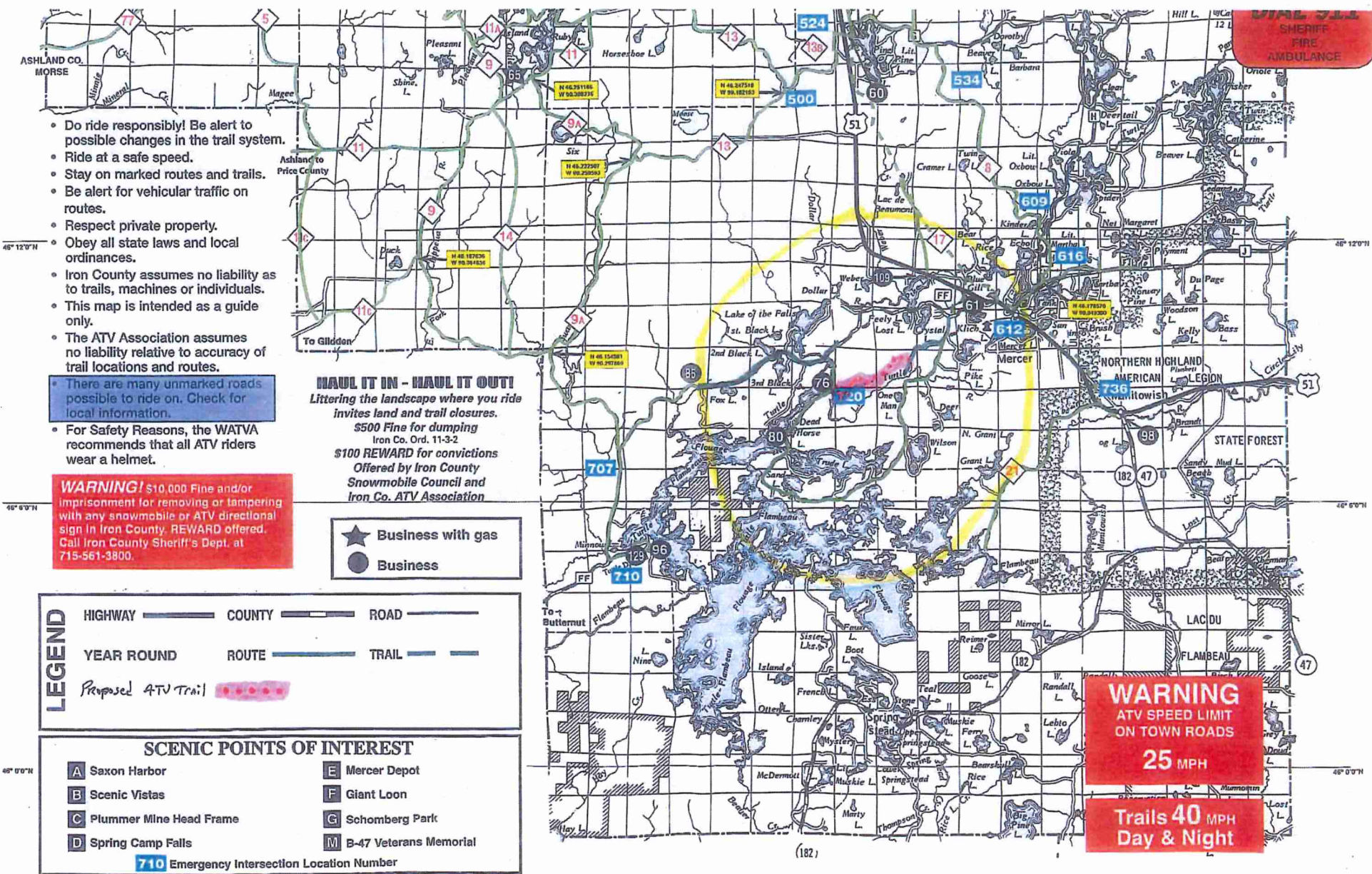
Proposed ATV Trail -- Popko Circle Cutoff
Town of Mercer, Iron County



Map Prepared By: Eric Peterson, Iron County Forestry & Parks

1:24,000





- Do ride responsibly! Be alert to possible changes in the trail system.
- Ride at a safe speed.
- Stay on marked routes and trails.
- Be alert for vehicular traffic on routes.
- Respect private property.
- Obey all state laws and local ordinances.
- Iron County assumes no liability as to trails, machines or individuals.
- This map is intended as a guide only.
- The ATV Association assumes no liability relative to accuracy of trail locations and routes.

There are many unmarked roads possible to ride on. Check for local information.

- For Safety Reasons, the WATVA recommends that all ATV riders wear a helmet.

WARNING! \$10,000 Fine and/or imprisonment for removing or tampering with any snowmobile or ATV directional sign in Iron County. REWARD offered. Call Iron County Sheriff's Dept. at 715-561-3800.

HAUL IT IN - HAUL IT OUT!
Littering the landscape where you ride invites land and trail closures.
\$500 Fine for dumping
Iron Co. Ord. 11-3-2
\$100 REWARD for convictions
Offered by Iron County Snowmobile Council and Iron Co. ATV Association

- ★ Business with gas
- Business

LEGEND

HIGHWAY ——— COUNTY ——— ROAD ———

YEAR ROUND ROUTE ——— TRAIL ———

Proposed ATV Trail [Red dashed line with dots]

SCENIC POINTS OF INTEREST

A Saxon Harbor	E Mercer Depot
B Scenic Vistas	F Giant Loon
C Plummer Mine Head Frame	G Schomberg Park
D Spring Camp Falls	M B-47 Veterans Memorial

710 Emergency Intersection Location Number

STATE SHERIFF FIRE AMBULANCE

WARNING
ATV SPEED LIMIT
ON TOWN ROADS
25 MPH
Trails 40 MPH
Day & Night